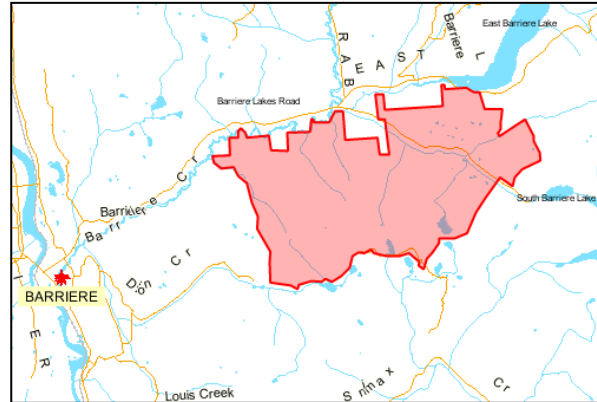




LOWER NORTH THOMPSON COMMUNITY FOREST SOCIETY



FALL 2010 NEWSLETTER

Welcome to our Fall 2010 newsletter. The Annual General Meeting was held on September 16, 2010. We had four directors attend along with our Administrative Assistant, Accountant and one member of the community.

BOARD OF DIRECTORS

Chairman – Harley Wright (Barriere)
Secretary/Treasurer – Martin Matthews
(Barriere)
Director – Ron Hindson (Barriere)
Director – Gailen Conan (Barriere)
Director – Hugh Fraser (Louis Creek)
Director – Ted Brown (Little Fort)

Vice-Chairman – Duane Eustache (Chu Chua)
Executive Director – Brian Bondar (Barriere)
Executive Director – Al Bush (Barriere)
Director – Greg Fennell (Barriere)
Director – Bert Rilcoe (Barriere)
Director – Wayne VanSickle (Louis Creek)
Director – Duncan McGrath (Little Fort)

NON-REPLACEABLE FOREST LICENSE A73247

- A regional policy change has resulted in an increase in the annual rent that will be charged to this license for extensions. As a result of this policy, our current plan is to complete all remaining harvesting (~37,000m³) under this license by July 31, 2011. Of this remaining volume, approximately 23,000 m³ is allocated to the Simpcw First Nation and 14,000m³ to the LNTCFS.
- Harvesting on Cutting Permit (CP) 7 (Moose Meadows) commenced September 2010. This permit is being logged by Dora Creek Contracting and J Grant McGill Logging, totals ~12,000m³, and will essentially complete the LNTCF portion of this license.
- Simpcw First Nation currently has a 13,000m³ permit in Tahweel planned for December harvesting, and is seeking additional volume to fulfill their portion of the license.
- Tree Planting on Cutting Permits 2 (fill plant), 8, and 10 (partial w/surplus trees) was completed in the spring of 2010 (128,430 seedlings). CP 9 is scheduled for planting in the spring of 2011 (121,700 seedlings).

COMMUNITY FOREST LICENSE K1Z

- The transition to a long-term (25 year) license has now taken place. As part of transition, we will be required to submit new management plan, including timber supply analysis, by March 31, 2012.
- Site preparation of ~40ha within Cutting Permits 4 and 5 was completed in September by Midwest Excavating, and consisted of a combination of stump removal and mounding treatments.
- Harvesting on Cutting Permit 3 Block 1 commenced in June and is now complete. This permit targeted pine salvage, was logged by K&G Contracting and totaled ~12,000m³.
- Harvesting on Cutting Permit 3 (Haggard Creek) Blocks 2-4 commenced October 2010 will be completed by Christmas. This permit targets pine salvage, is being logged by Dora Creek Contracting and totals ~8,400m³.
- Harvesting on Cutting Permit 2 (Blomley Creek) Blocks 1-2 commenced September 2010 will be completed by Christmas. This permit targets pine salvage, is being logged by DRB Contracting (as a subcontractor under Simpcw Resources Ltd.) and totals ~12,500m³.
- Harvesting on Cutting Permit 4 (Haggard Creek) Blocks 3-6 totaling ~13,000m³ is planned for harvesting by breakup and is targeting pine salvage. Contractor selection for logging of this volume is currently underway.
- Tree Planting on Cutting Permits 1 (blocks 1-3) & 2 was completed in the spring of 2010 (134,775 seedlings). CP 1 Blocks 9-11, CP 4 Blocks 1-2, and CP 5 Blocks 1-4 are scheduled for planting in the Spring of 2011 (78,800 seedlings).
- 2010/11 Forest Investment Account funding is being utilized for brushing and spacing surveys and treatments on backlog openings within community forest. Spacing treatments are currently being carried out by the Neskonlith Indian Band on Opening 82M021-24.
- We have now achieved SAFE certification under the SEBASE category; this is now required for all contractors.
- Sponsoring a Job Creation Partnership program through Ministry of Housing and Social Development to provide training and work experience for EI funded participants. Susan Bondar has been hired as a supervisor for this project, which runs from June to November.

Thanks again for your continued support. If you have any questions, comments or concerns, please feel free to contact me at (250) 672-1941.

Yours truly,

Mike Francis, RPF